

ABCF2 Polyclonal Antibody

Catalog number: 10226-1-AP

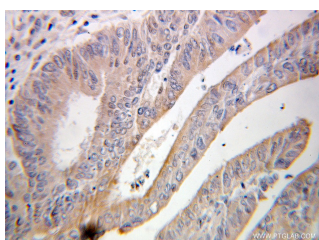
Size: 26 µg/150 µl

Source: Rabbit

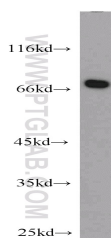
Isotype: IgG

Synonyms:

ABCF2; ABC28, ABCF2,
DKFZp586K1823, EST133090,
HUSSY 18, HUSSY18, M ABC1



Immunohistochemical of paraffin-embedded human colon cancer using 10226-1-AP(ABCF2 antibody) at dilution of 1:100 (under 25x lens)



HEK-293 cells were subjected to SDS PAGE followed by western blot with 10226-1-AP(ABCF2 antibody) at dilution of 1:1000

Background

ABCF2 (ABC28, M-ABC1, HUSSY-18, EST133090, DKFZp586K1823) is a member of the superfamily of ATP-binding cassette (ABC) transporters. ABC proteins are composed of transmembrane domains (TMDs), and nucleotide binding domains (NBDs, or ATP-binding cassettes, ABSs). Based on their sequence similarity scores, the members of the human ABC protein family can be grouped into eight subfamilies, including the MDR/TAP, the ALD, the MRP/CFTR, the ABC1, the White, the RNaseL inhibitor, the ANSA, and the GCN20 subfamilies. ABCF2 is a member of the GCN20 subfamily. ABC proteins transport various molecules across extra- and intracellular membranes.

Applications

Tested applications:	ELISA, WB, IHC
Species specificity:	Human, Mouse; other species not tested.
Calculated ABCF2 MW:	71 kDa
Observed ABCF2 MW:	71 kDa
Positive WB detected in	HEK-293 cells, HeLa cells, NIH/3T3 cells
Positive IHC detected in	Human colon cancer tissue
Recommended dilution:	WB: 1:500-1:5000 IHC: 1:20-1:200

Application key: WB = Western blotting, IHC = Immunohistochemistry, IF = Immunofluorescence, IP = Immunoprecipitation

Immunogen information

Immunogen:	Ag0310
GenBank accession number:	BC001661
Gene ID (NCBI):	10061
Full name:	ATP-binding cassette, sub-family F (GCN20), member 2

Product information

Purification method:	Antigen affinity purification
Storage:	PBS with 0.1% sodium azide and 50% glycerol pH 7.3. Store at -20°C.