

## ACP6 Polyclonal Antibody

Catalog number: 12965-1-AP

Size: 23 µg/150 µl

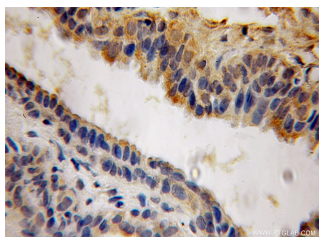
Source: Rabbit

Isotype: IgG

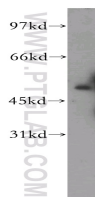
Synonyms:

ACP6; ACP6, ACPL1, LPAP,

PACPL1



Immunohistochemical of paraffin-embedded human prostate cancer using 12965-1-AP (ACP6 antibody) at dilution of 1:100 (under 10x lens)



human liver tissue were subjected to SDS PAGE followed by western blot with 12965-1-AP (ACP6 antibody) at dilution of 1:300

### Applications

Tested applications:	ELISA, WB, IHC
Species specificity:	Human, Mouse; other species not tested.
Calculated ACP6 MW:	428aa, 49 kDa
Observed ACP6 MW:	49kd
Positive WB detected in	Human liver tissue, mouse liver tissue
Positive IHC detected in	Human prostate cancer tissue
Recommended dilution:	WB: 1:200-1:2000 IHC: 1:20-1:200

Application key: WB = Western blotting, IHC = Immunohistochemistry, IF = Immunofluorescence, IP = Immunoprecipitation

### Immunogen information

Immunogen:	Ag3633
GenBank accession number:	BC034686
Gene ID (NCBI):	51205
Full name:	Acid phosphatase 6, lysophosphatidic

### Product information

Purification method:	Antigen affinity purification
Storage:	PBS with 0.1% sodium azide and 50% glycerol pH 7.3. Store at -20°C.