

CRABP1 Polyclonal Antibody

Catalog number: 12588-1-AP

Size: 22 µg/150 µl

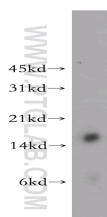
Source: Rabbit

Isotype: IgG

Synonyms:

CRABP1; CRABP, CRABP I,

CRABP1, CRABPI, RBP5



human spleen tissue were subjected to SDS PAGE followed by western blot with 12588-1-AP(CRABP1 antibody) at dilution of 1:500

Background

The cellular retinoic acid-binding proteins including CRABP1 and CRABP2 bind retinoic acid (RA), an important regulator of cell growth and differentiation, thus play an important role in RA-mediated differentiation and proliferation processes. It has been reported that CRABP1 influences the biological effects of RA in cell-selective manners by enhancing the physiological function of RA in keratinocytes or inhibiting RA-induced differentiation of neuroblastoma cells.

Applications

Tested applications:	ELISA, WB
Cited applications:	IHC, WB
Species specificity:	Human, Mouse, Rat; other species not tested.
Cited species:	Human
Calculated CRABP1 MW:	137aa, 15 kDa
Observed CRABP1 MW:	15kd
Positive WB detected in	Human spleen tissue, Transfected HEK-293 cells
Recommended dilution:	WB: 1:300-1:1500

Application key: WB = Western blotting, IHC = Immunohistochemistry, IF = Immunofluorescence, IP = Immunoprecipitation

Immunogen information

Immunogen:	Ag3291
GenBank accession number:	BC022069
Gene ID (NCBI):	1381
Full name:	Cellular retinoic acid binding protein 1

Product information

Purification method:	Antigen affinity purification
Storage:	PBS with 0.1% sodium azide and 50% glycerol pH 7.3. Store at -20°C.