

ACTR1B Polyclonal Antibody

Catalog number: 11023-1-AP

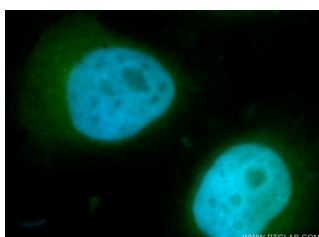
Size: 25 µg/150 µl

Source: Rabbit

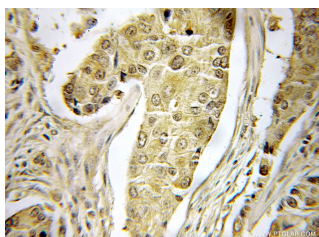
Isotype: IgG

Synonyms:

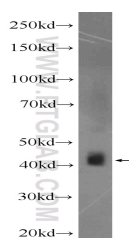
ACTR1B; Actin related protein
1B, ACTR1B, ARP1B, Beta
centractin, CTRN2, PC3



Immunofluorescent analysis of MCF-7 cells, using ACTR1B antibody 11023-1-AP at 1:50 dilution and FITC-labeled donkey anti-rabbit IgG (green). Blue pseudocolor = DAPI (fluorescent DNA dye).



Immunohistochemical of paraffin-embedded human breast cancer using 11023-1-AP (ACTR1B antibody) at dilution of 1:50 (under 40x lens)



mouse heart tissue were subjected to SDS PAGE followed by western blot with 11023-1-AP (ACTR1B Antibody) at dilution of 1:600

Applications

Tested applications:	ELISA, IHC, IF, WB
Species specificity:	Human, Mouse, Rat; other species not tested.
Calculated ACTR1B MW:	42 kDa
Observed ACTR1B MW:	42-50 kDa
Positive WB detected in	Mouse heart tissue
Positive IHC detected in	Human breast cancer tissue
Positive IF detected in	MCF-7 cells
Recommended dilution:	WB: 1:200-1:2000 IHC: 1:20-1:200 IF: 1:20-1:200

Application key: WB = Western blotting, IHC = Immunohistochemistry, IF = Immunofluorescence, IP = Immunoprecipitation

Immunogen information

Immunogen:	Ag1467
GenBank accession number:	BC010090
Gene ID (NCBI):	10120
Full name:	ARP1 actin-related protein 1 homolog B, centractin beta (yeast)

Product information

Purification method:	Antigen affinity purification
Storage:	PBS with 0.1% sodium azide and 50% glycerol pH 7.3. Store at -20°C.