

FIS1 Polyclonal Antibody

Catalog number: 10956-1-AP

Size: 50 µg/150 µl

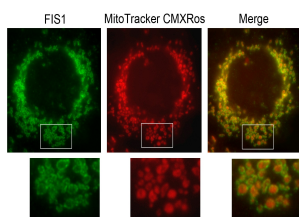
Source: Rabbit

Isotype: IgG

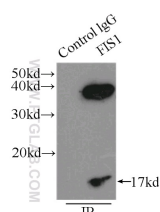
Synonyms:

FIS1; CGI 135, FIS1, FIS1

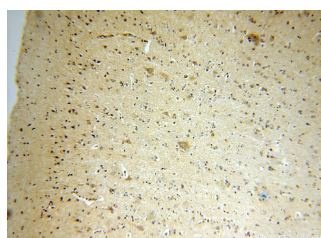
homolog, hFis1, TPR repeat
protein 11, TTC11



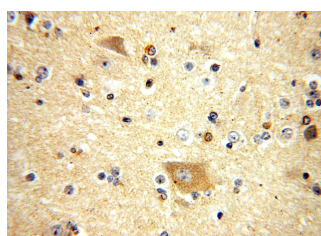
IF result of anti-FIS1(10956-1-AP,1:100) with Hepa1-6 cell by Dr. Steven Eugene Smith.
Mitochondrion outer membrane (Green) Stain.



IP Result of anti-FIS1 (IP:10956-1-AP, 3ug; Detection:10956-1-AP 1:500) with HeLa cells lysate 3000ug.



Immunohistochemical of paraffin-embedded human brain using 10956-1-AP(FIS1 antibody) at dilution of 1:25 (under 10x lens)



Background

Fis1 (fission 1) is an integral mitochondrial outer membrane protein that participates in mitochondrial fission by interacting with dynamin-related protein 1 (Drp1). Excessive mitochondrial fission is associated with the pathology of a number of neurodegenerative or neurodevelopmental diseases. Increased expression of Fis1 has been found in Huntington's disease (HD)-affected brain, Alzheimer's disease (AD) patients, and autism spectrum disorder. This antibody was raised against the full-length of human Fis1 protein, and recognizes endogenous Fis1 protein in various lysates. (21257639, 21459773, 23333625)

Applications

Tested applications:	ELISA, IHC, IF, IP, WB
Cited applications:	IF, IHC, IP, WB
Species specificity:	Human, Mouse, Rat; other species not tested.
Cited species:	Human, mouse
Calculated FIS1 MW:	17 kDa
Observed FIS1 MW:	17 kDa
Positive WB detected in	Mouse brain tissue, A431 cells, COLO 320 cells, HEK-293 cells, HeLa cells, human heart tissue, human spleen tissue, mouse heart tissue, mouse thymus tissue, rat brain tissue, rat heart tissue
Positive IP detected in	HeLa cells
Positive IHC detected in	Human brain tissue, human prostate cancer tissue
Positive IF detected in	Hepa1-6 cells
Recommended dilution:	WB: 1:500-1:5000 IP: 1:200-1:2000 IHC: 1:10-1:100 IF: 1:10-1:100

Application key: WB = Western blotting, IHC = Immunohistochemistry, IF = Immunofluorescence, IP = Immunoprecipitation

Immunogen information

Immunogen:	Ag1409
GenBank accession number:	BC009428
Gene ID (NCBI):	51024
Full name:	Fission 1 (mitochondrial outer membrane) homolog (S. cerevisiae)

Product information

Purification method:	Antigen affinity purification
Storage:	PBS with 0.1% sodium azide and 50% glycerol pH 7.3. Store at -20°C.



Immunohistochemical of
paraffin-embedded human
brain using 10956-1-AP(FIS1
antibody) at dilution of 1:25
(under 40x lens)

mouse brain tissue were
subjected to SDS PAGE
followed by western blot with
10956-1-AP(FIS1 Antibody)
at dilution of 1:1000