

ACTA2/smooth muscle actin Polyclonal Antibody

Catalog number: 14395-1-AP

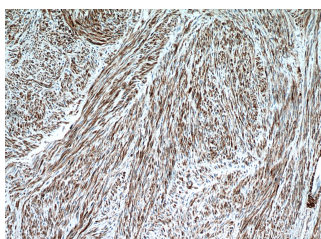
Size: 44 µg/150 µl

Source: Rabbit

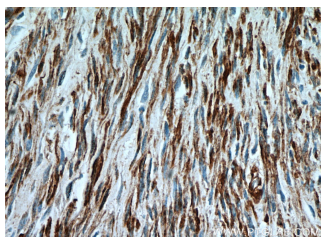
Isotype: IgG

Synonyms:

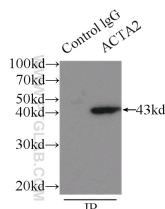
ACTA2; a SMA, AAT6, ACTA2,
ACTA2 Smooth muscle Actin,
Actin, aortic smooth muscle,
Actin, aortic smooth muscle
Actin, ACTSA, ACTVS, Alpha
actin 2, Alpha SMA, a-SMA, α
SMA



Immunohistochemical of paraffin-embedded human hysteromyoma using 14395-1-AP (ACTA2 antibody) at dilution of 1:50 (under 10x lens)



Immunohistochemical of paraffin-embedded human hysteromyoma using 14395-1-AP (ACTA2 antibody) at dilution of 1:50 (under 40x lens)



IP Result of anti-ACTA2 (IP:14395-1-AP, 3ug; Detection:14395-1-AP 1:1000) with mouse liver tissue lysate 6000ug.

Background

ACTA2 (also known as α-smooth muscle actin or α-SMA) belongs to the actin family. Actins are highly conserved proteins that are involved in various types of cell motility and are ubiquitously expressed in all eukaryotic cells. ACTA2 is primarily expressed in vascular smooth muscle and anti-ACTA2 is commonly used to marker smooth muscle cells. This antibody may cross-react with other isoforms of actins.

Applications

Tested applications:	ELISA, IHC, IP, WB, FC, IF
Cited applications:	IF, IHC, WB
Species specificity:	Human, Mouse, Rat; other species not tested.
Cited species:	Human, mouse, rat
Calculated ACTA2/smooth muscle actin MW:	377aa, 42 kDa
Observed ACTA2/smooth muscle actin MW:	43 kDa
Positive WB detected in	Human placenta tissue, HEK-293 cells, human bladder tissue, K-562 cells, mouse heart tissue, mouse kidney tissue, mouse liver tissue, mouse ovary tissue, rat heart tissue
Positive IP detected in	Mouse liver tissue
Positive IHC detected in	Human hysteromyoma tissue, human heart tissue, human liver cancer tissue, human liver tissue, human skeletal muscle tissue
Positive IF detected in	C2C12 cell
Positive FC detected in	C2C12 cell
Recommended dilution:	WB: 1:500-1:5000 IP: 1:500-1:5000 IHC: 1:20-1:200 IF: 1:20-1:200 FC: N/A

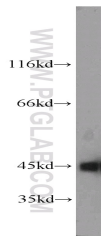
Application key: WB = Western blotting, IHC = Immunohistochemistry, IF = Immunofluorescence, IP = Immunoprecipitation

Immunogen information

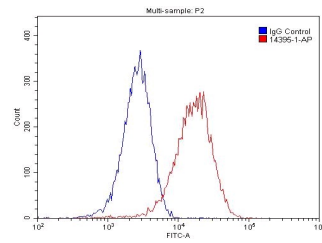
Immunogen:	Ag5886
GenBank accession number:	BC017554
Gene ID (NCBI):	59
Full name:	Actin, alpha 2, smooth muscle, aorta

Product information

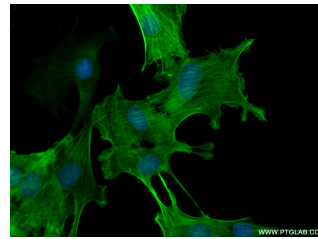
Purification method:	Antigen affinity purification
Storage:	PBS with 0.02% sodium azide and 50% glycerol pH 7.3. Store at -20°C.



human placenta tissue were subjected to SDS PAGE followed by western blot with 14395-1-AP(ACTA2 antibody) at dilution of 1:1000



1×10^6 C2C12 cell were stained with 0.2ug ACTA2 antibody (14395-1-AP, red) and control antibody (blue). Fixed with 4% PFA blocked with 3% BSA (30 min). Alexa Fluor 488-conjugated AffiniPure Goat Anti-Rabbit IgG(H+L) with dilution 1:1500.



Immunofluorescent analysis of (-20 \square Ethanol) fixed C2C12 cell using 14395-1-AP(ACTA2 Antibody) at dilution of 1:50 and Alexa Fluor 488-conjugated AffiniPure Goat Anti-Rabbit IgG(H+L)